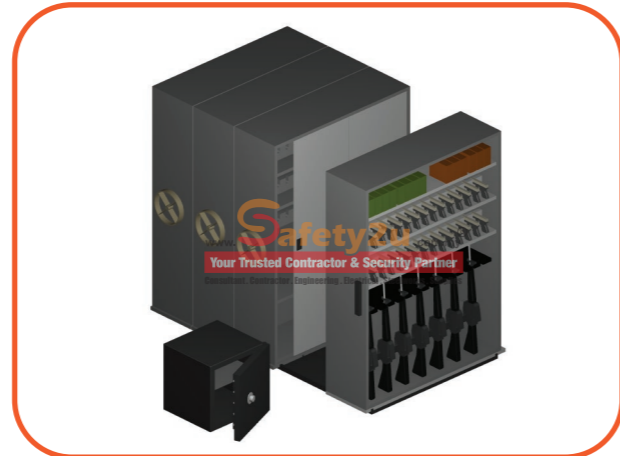




Consultant. Contractor. Engineering. Electrical. Steelworks. Supplies



S2U CLEARING CHAMBER & BOOTH



S2U GUNRACK & S2U STORAGE



S2U PANIC ROOM @ BUNKER



S2U WEAPONRY SERVICE TABLE



S2U SECURITY COUNTER



S2U L/XL ARMORED DOOR

*Illustration purposes only



EMIR BINA SDN. BHD. (1050178-M)
403, A, Blok 1,
Laman Seri Business Park,
Persiaran Sukan, Seksyen 13,
40100 Shah Alam,
Selangor Darul Ehsan, Malaysia.

T +603.5524.4467
+603.5524.4468
F +603.5524.4463
E emirbinagroup@gmail.com



#safety2u
www.emirbina.com.my
+6019.335.7862



www.emirbina.com.my

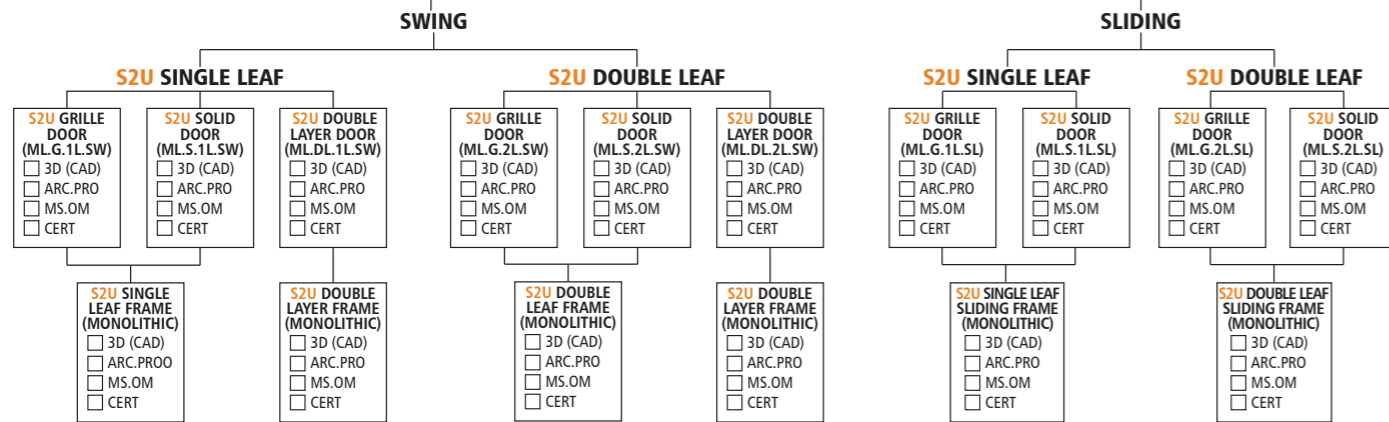
CATALOGUE CHART

- 1. DETENTION (ASTM/SIRIM)
- 2. BURGLARY MATERIAL
- 3. BALLISTIC MATERIAL
- 4. FIRE-RATED MATERIAL
- 5. EXPLOSIVE MATERIAL
- 6. ACOUSTIC MATERIAL

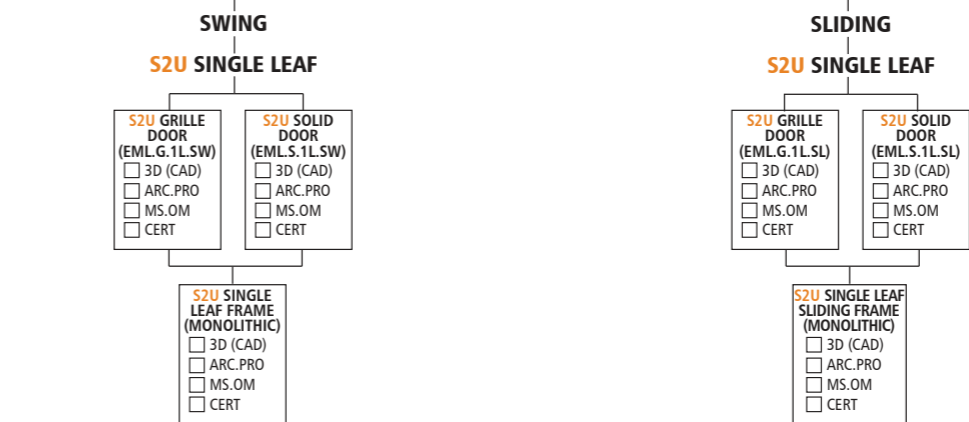
| DOOR CODE LEGEND: | | | |
|---------------------------------|-------------------|--|--|
| ML = MECHANICAL LOCKSET | 1L = SINGLE LEAF | | |
| EML = ELECTROMECHANICAL LOCKSET | 2L = DOUBLE LEAF | | |
| G = GRILLE DOOR | DL = DOUBLE LAYER | | |
| S = SOLID DOOR | SW = SWING | | |
| | SL = SLIDING | | |

SAFETY2U (S2U). DETENTION, PRISON & CUSTODIAL (D.P.C). SOUTHERN FOLGER (SF): SOUTHERN STEEL, FOLGER ADAM & RR BRINK DETENTION LOCKSET & EQUIPMENT

SAFETY2U STEEL DOOR: MECHANICAL



SAFETY2U STEEL DOOR: ELECTROMECHANICAL LOCK (AUTOMATIC OPENING)



S2U PANEL: WALL & WINDOW

MONOLITHIC

- 3D (CAD)
- ARC.PRO
- MS

NON MONOLITHIC

- 3D (CAD)
- ARC.PRO
- MS

NOTE!
Applicable to old/aging buildings only (HIGHER COST)

S2U PANEL: ANTI VANDAL & BALLISTIC

MONOLITHIC

- 3D (CAD)
- ARC.PRO
- MS

NON MONOLITHIC

- 3D (CAD)
- ARC.PRO
- MS

NOTE!
Applicable to old/aging buildings only (HIGHER COST)

S2U FILM & GLASS: ANTI-VANDAL & BALLISTIC

MONOLITHIC

- 3D (CAD)
- ARC.PRO
- MS

NON MONOLITHIC

- 3D (CAD)
- ARC.PRO
- MS

NOTE!
Applicable to old/aging buildings only (HIGHER COST)

S2U ARMORY COUNTER C/W EXPENDED METAL

MONOLITHIC

- 3D (CAD)
- ARC.PRO
- MS

NON MONOLITHIC

- 3D (CAD)
- ARC.PRO
- MS

NOTE!
Applicable to old/aging buildings only (HIGHER COST)

- SWING D.P.C MECHANICAL LOCKS**

 - SF 10 SERIES DEADLOCK**
 - 3D (CAD)
 - ARC.PRO
 - N.S
 - CERT- SF 80 SERIES DEADLOCK**
- 3D (CAD)
- ARC.PRO
- N.S
- CERT

SLIDING D.P.C MECHANICAL LOCKS

 - SF 30 SERIES DEADLOCK**
 - 3D (CAD)
 - ARC.PRO
 - N.S- 105 HEAD & FOOTBOLT**
- 3D (CAD)
- ARC.PRO
- N.S

- SWING AND SLIDING MECHANICAL LOCKS COMPONENTS**

 - DETENTION HINGES**
 - 3D (CAD)
 - ARC.PRO
 - N.S- DETENTION ESCUTCHEON**
- 3D (CAD)
- ARC.PRO
- N.S

SLIDING MECHANICAL LOCKS COMPONENTS

 - DETENTION TRACK SET**
 - 3D (CAD)
 - ARC.PRO
 - N.S- DETENTION STRIKE PLATE**
- 3D (CAD)
- ARC.PRO
- N.S

- SWING D.P.C EML LOCKS**

 - SF 300 SERIES**
 - 3D (CAD)
 - ARC.PRO
 - N.S
 - CERT- SF 120 SERIES**
- 3D (CAD)
- ARC.PRO
- N.S
- CERT

SLIDING D.P.C EML LOCKS

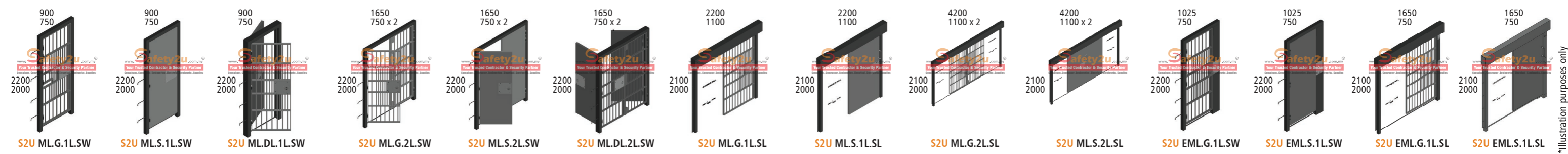
 - SF 58 SERIES**
 - 3D (CAD)
 - ARC.PRO
 - N.S
 - CERT- *DETENTION AUTOMATIC LOCK**
- 3D (CAD)
- ARC.PRO
- N.S

- SWING AND SLIDING EML LOCKS COMPONENTS**

 - DETENTION HINGES**
 - 3D (CAD)
 - ARC.PRO
 - N.S- DETENTION STRIKE PLATE**
- 3D (CAD)
- ARC.PRO
- N.S

SLIDING EML LOCKS COMPONENTS

 - DETENTION TRACKSET**
 - 3D (CAD)
 - ARC.PRO
 - N.S



OUR LEVEL AND AREAS OF SECURITY

| ROOMS | INNER (BUILDING) |
|---|----------------------------|
| CELL DOOR | BLACK MARIA |
| MAIL ROOM | INDOOR CORRIDOR |
| EXERCISE AREA | AIRLOCK (SALLY PORT) |
| LAUNDRY ROOM | EMERGENCY STAIRCASE |
| FORENSIC ROOM | |
| ARMORY COUNTER | MIDDLE (GROUNDS) |
| STRONG / PANIC ROOM | OUTDOOR WALKWAY |
| INTERROGATION ROOM | MANHOLE / MAIN COVER |
| ARMORY / WEAPONS ROOM | |
| SERVICE, RISER, HOSE ROOM | |
| IDENTIFICATION / VISITOR ROOM | OUTER (PERIMETER) |
| CONTRABAND / EVIDENCE ROOM | WATCHTOWER |
| CCTV, DOCUMENT, SERVER ROOM | INMATE PASSAGEWAY |
| CENTER CONTROL / OFFICER GUARD ROOM | MAIN ENTRANCE GATE / FENCE |
| HAZARDOUS / NARCOTIC / UTILITIES STORAGE ROOM | |

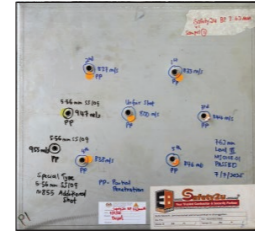
SAFETY2U DOORS

- 1) ULTIMATE SPECIALTY DOORS**
 - Wind load resistant fire-rated door
 - Blast resistant door
 - Airtight door
 - Water resistant door
 - Acoustic metal door
- 2) EXCEPTIONAL INTERIOR DOORS**
 - Steel interior door
- 3) SUPERIOR FIRE-RATED SHUTTERS**
 - Steel fire roller shutter
 - Fabric fire-rated roller shutter
 - Stacking fabric fire-rated shutter
- 4) PREMIUM FIRE-RATED DOORS**
 - Performance fire-rated door
 - Standard fire-rated door
 - Glazed fire-rated door
 - Oversized steel fire-rated door

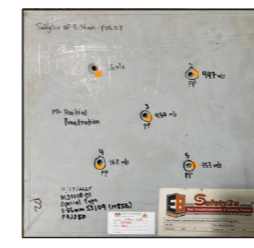
Safety2u Test Standard for Bulletproof Panel @ Door 9mm - NIJ STD 0108.01 (111A)



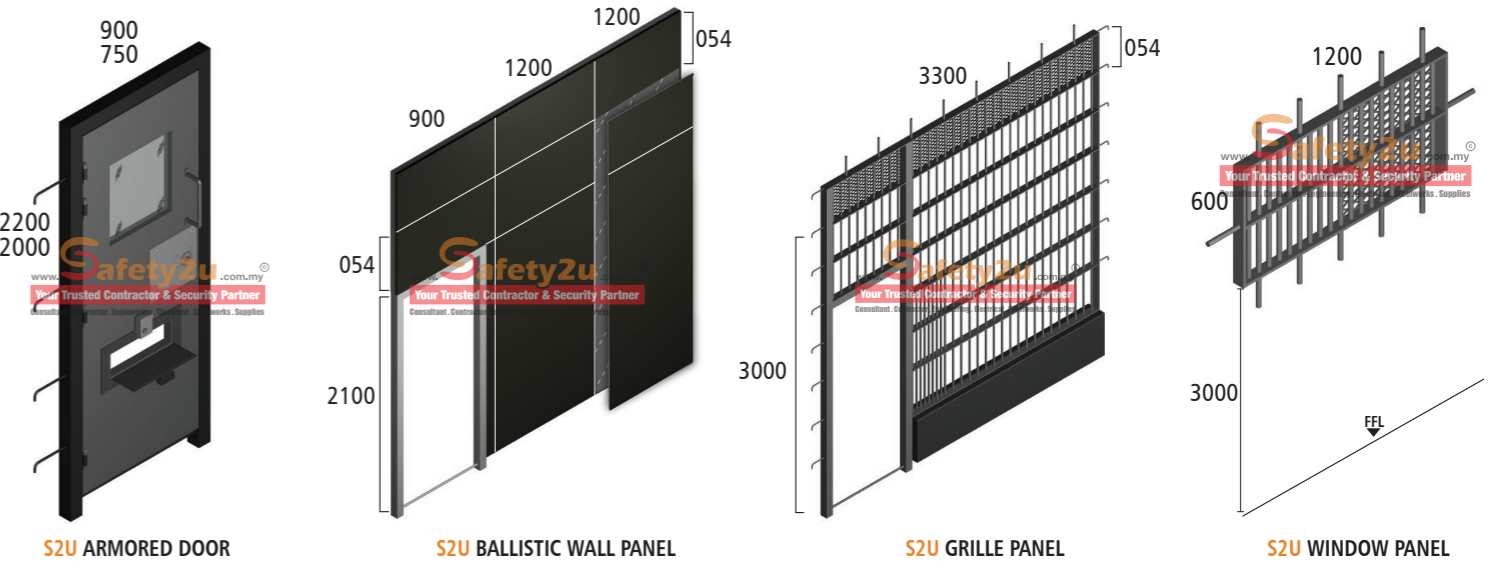
Safety2u Test Standard for Bulletproof Panel @ Door 7.62mm - NIJ STD 0108.01 (111)



Safety2u Test Standard for Bulletproof Panel @ Door 5.56mm - NIJ STD 0108.01 (Special Type)



Safety2u Test Standard for Film & Glass 9mm - AS INZS 2343 - 1997 (GO)



*Illustration purposes only